

## SPP1 Ab

Cat.#: BF0002  
Size: 50ul,100ul,200ul

Concn.: 1mg/ml  
Source: Mouse

Mol.Wt.: 35.4kDa  
Clonality: Monoclonal

Application:	ELISA 1/10000, WB 1/500 - 1/2000, IHC 1/200 - 1/1000, ICC 1/200 - 1/1000
Reactivity:	Human
Purification:	Affinity-chromatography.
Specificity:	SPP1 Ab detects endogenous levels of total SPP1.
Immunogen:	Purified recombinant fragment of human SPP1 expressed in E. Coli.
Uniprot:	P10451
Description:	The protein encoded by this gene is involved in the attachment of osteoclasts to the mineralized bone matrix. The encoded protein is secreted and binds hydroxyapatite with high affinity. The osteoclast vitronectin receptor is found in the cell membrane and may be involved in the binding to this protein. This protein is also a cytokine that upregulates expression of interferon-gamma and interleukin-12. Several transcript variants encoding different isoforms have been found for this gene.
Subcellular Location:	Secreted.
Tissue Specificity:	Bone. Found in plasma.
Similarity:	Belongs to the osteopontin family.
Storage Condition and Buffer:	Mouse IgG1 in phosphate buffered saline (without Mg <sup>2+</sup> and Ca <sup>2+</sup> ), pH 7.4, 150mM NaCl, 0.02% sodium azide and 50% glycerol.Store at -20 °C.Stable for 12 months from date of receipt.

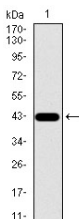
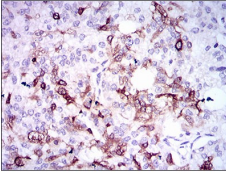


Figure 1: Western blot analysis using SPP1 mAb against human SPP1 recombinant protein. (Expected MW is 42.6 kDa)



Immunohistochemical analysis of paraffin-embedded prostate cancer tissues using SPP1 mouse mAb with DAB staining.

**IMPORTANT:** For western blot, incubate membrane with diluted primary Ab in 5% w/v milk , 1X TBS, 0.1% Tween@20 at 4°C with gentle shaking, overnight.

For Research Use Only. Not for use in diagnostic and therapeutic procedures. Not for resale without express authorization.